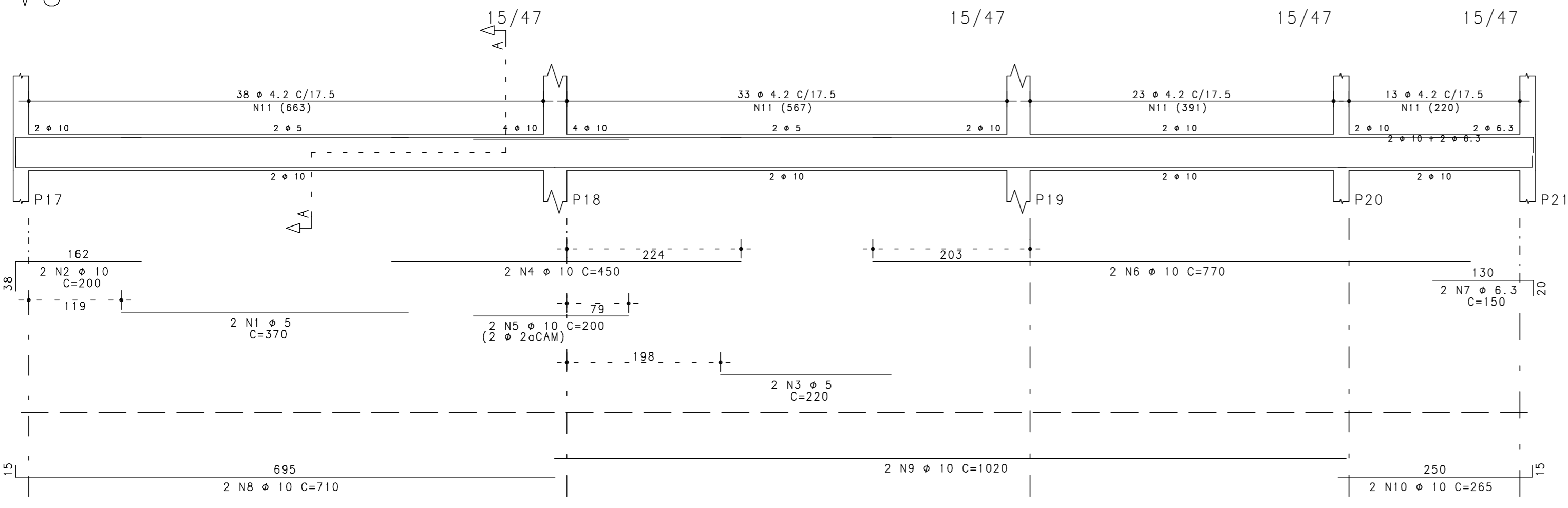
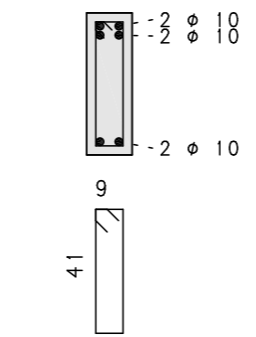


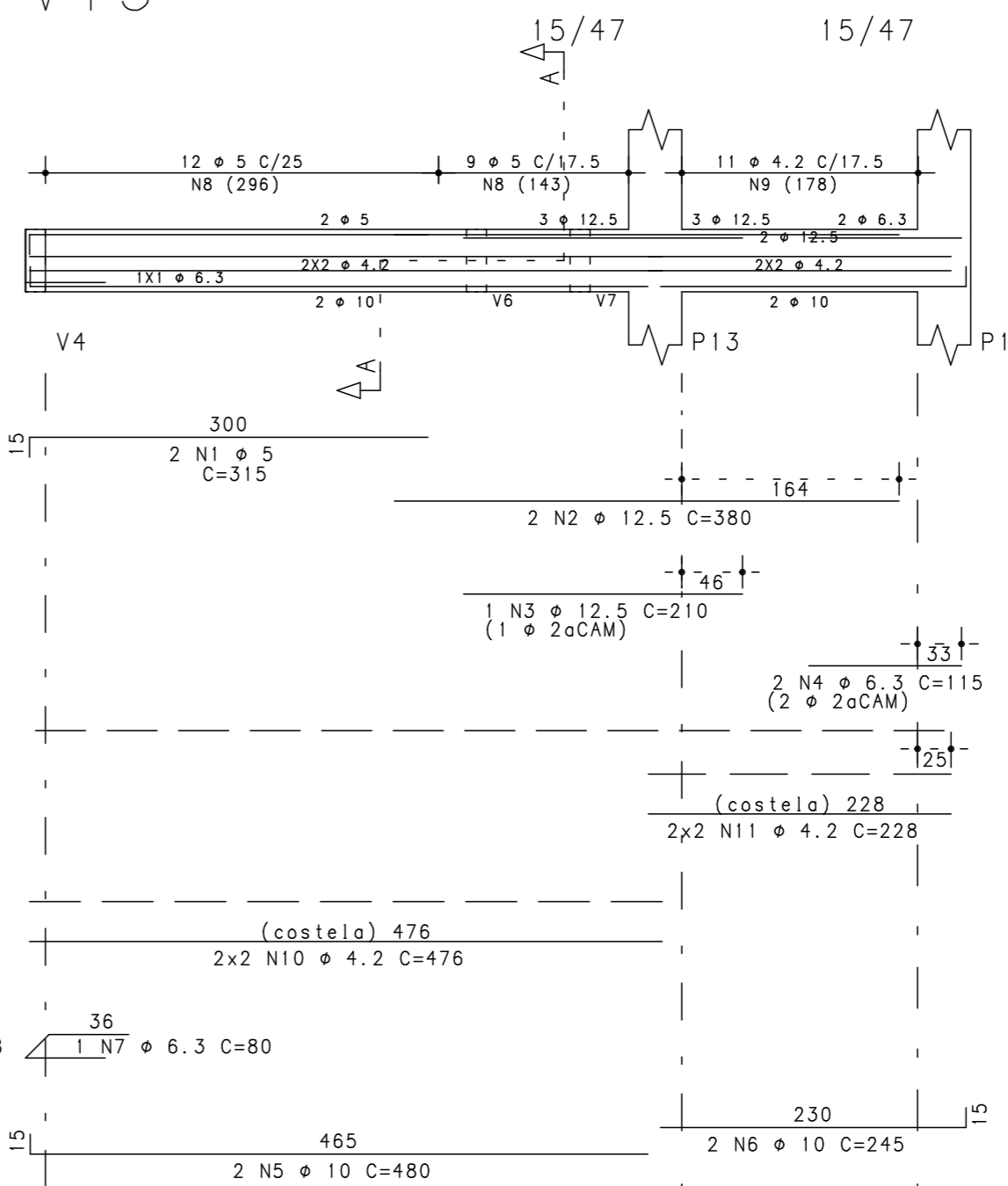
V8



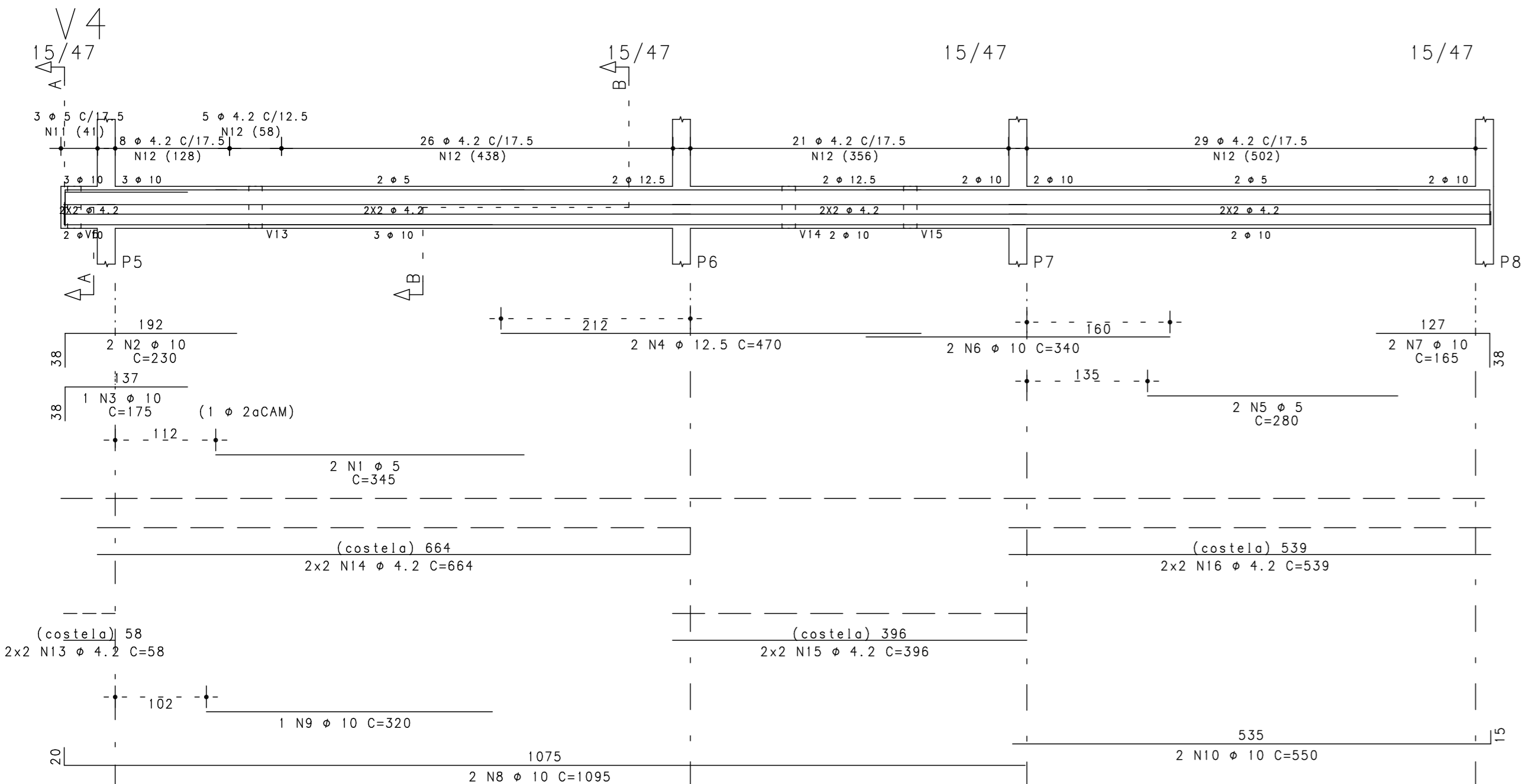
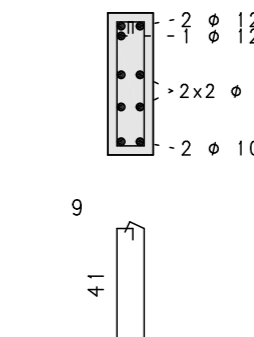
Corte A



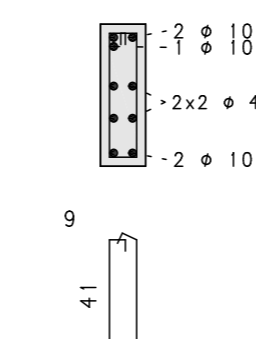
V13



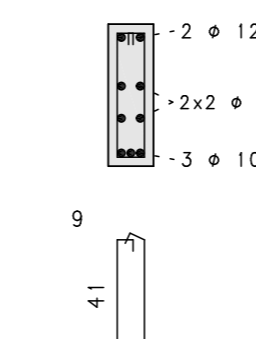
Corte A



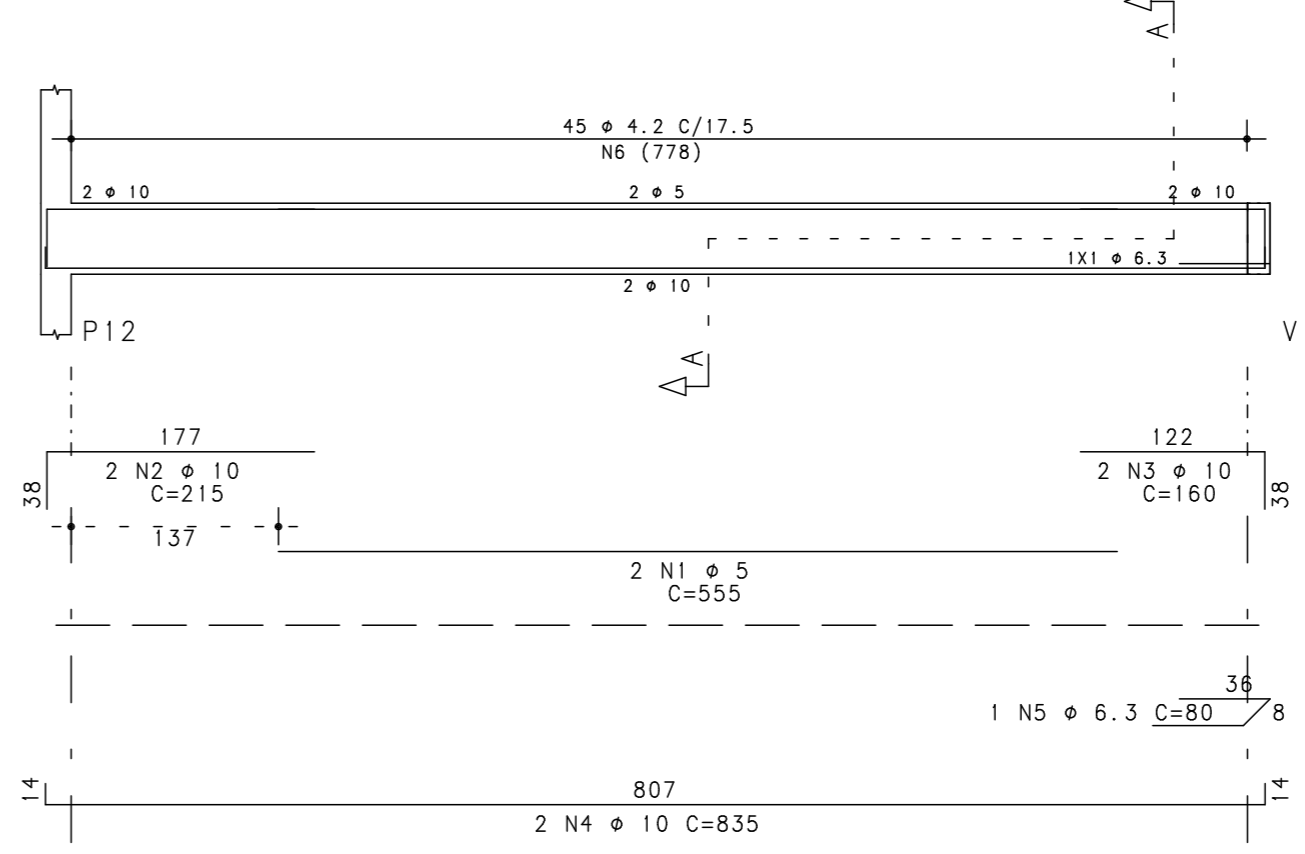
Corte A



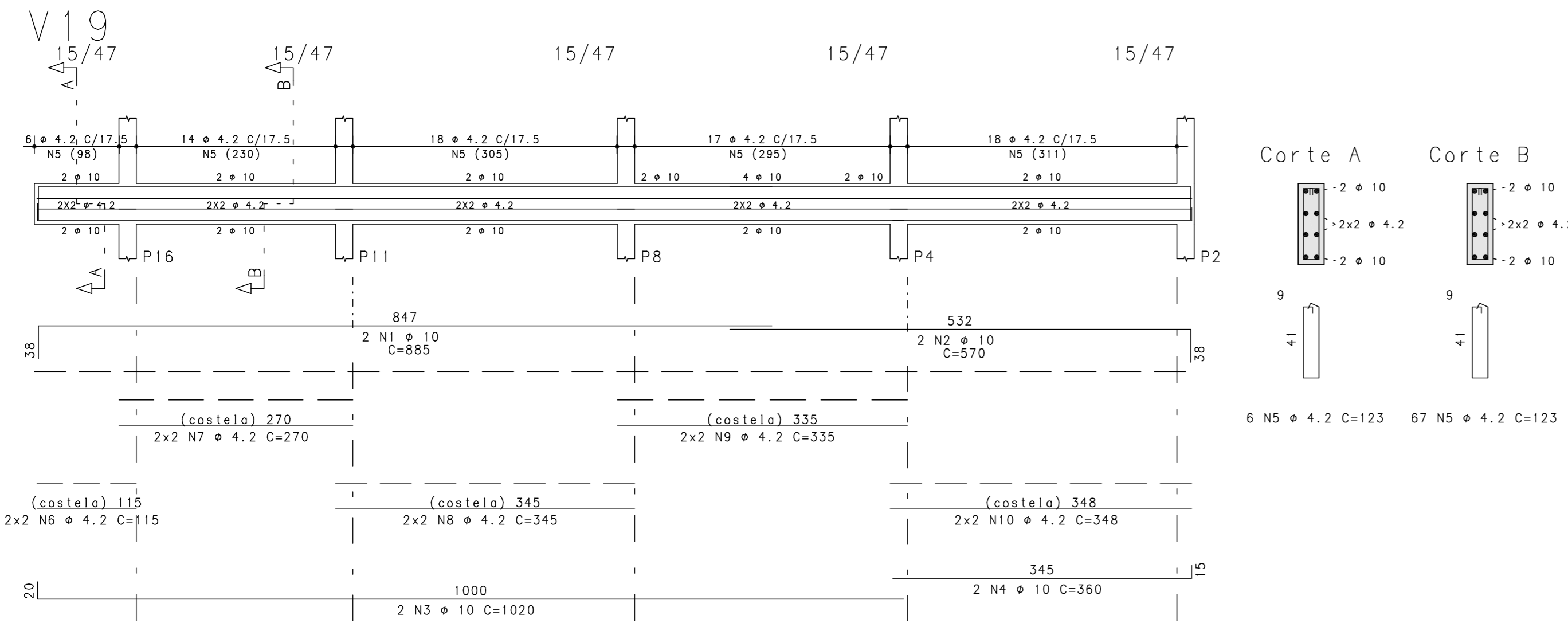
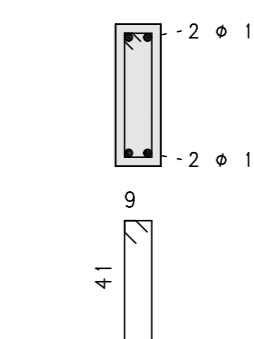
Corte B



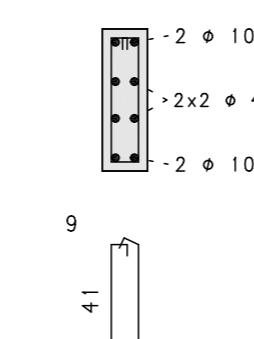
V7



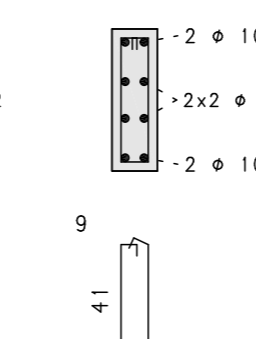
Corte A



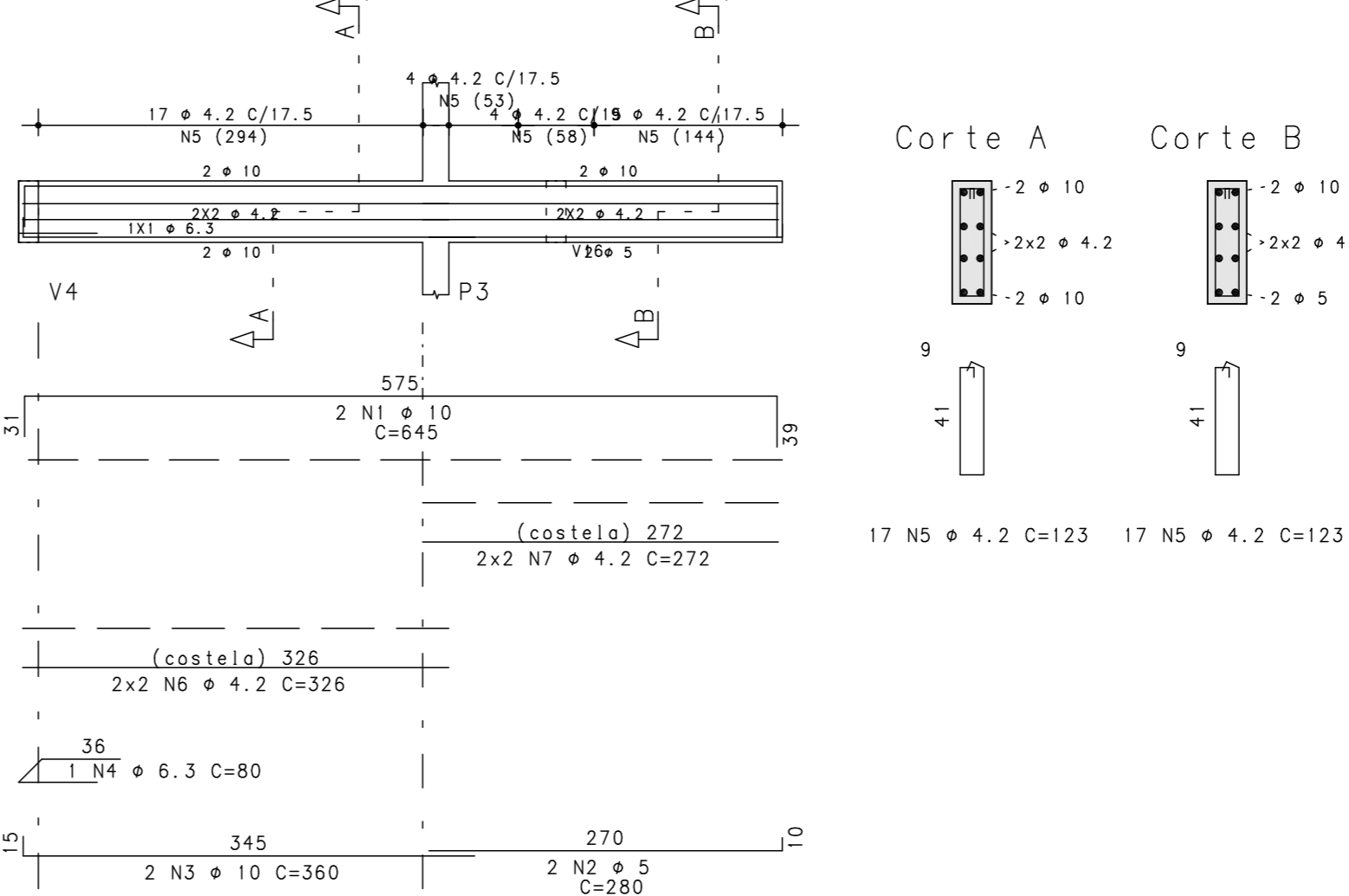
Corte A



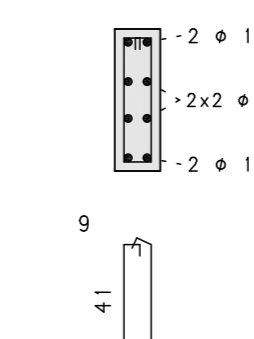
Corte B



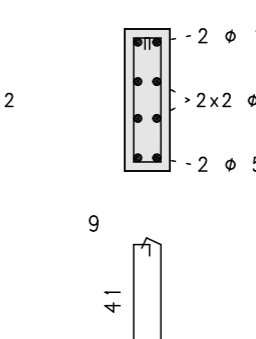
V15



Corte A



Corte B



ACO	POS	BIT (mm)	QUANT	COMPRIMENTO	
				UNIT	TOTAL (cm)
V4					
60B	1	5	2	345	690
50A	2	10	2	230	460
50A	3	10	1	175	175
50A	4	12.5	2	470	940
60B	5	5	2	280	560
50A	6	10	2	340	680
50A	7	10	2	165	330
50A	8	10	2	1095	2190
50A	9	10	1	320	320
50A	10	10	2	550	1100
60B	11	5	3	123	369
60B	12	4.2	89	123	10947
60B	13	4.2	4	58	232
60B	14	4.2	4	664	2656
60B	15	4.2	4	396	1584
60B	16	4.2	4	539	2156
V7					
60B	1	5	2	555	1110
50A	2	10	2	215	430
50A	3	10	2	160	320
50A	4	10	2	835	1670
50A	5	6.3	1	80	80
60B	6	4.2	45	114	5130
V8					
60B	1	5	2	370	740
50A	2	10	2	200	400
60B	3	5	2	220	440
50A	4	12.5	2	450	900
50A	5	10	2	200	400
50A	6	10	2	770	1540
50A	7	6.3	2	150	300
50A	8	10	2	710	1420
50A	9	10	2	1020	2040
50A	10	10	2	265	530
60B	11	4.2	107	114	12198
V13					
60B	1	5	2	315	630
50A	2	12.5	2	380	760
50A	3	12.5	1	210	210
50A	4	6.3	2	115	230
50A	5	10	2	480	960
50A	6	10	2	245	490
50A	7	6.3	1	80	80
60B	8	5	21	123	2583
60B	9	4.2	11	123	1353
60B	10	4.2	4	476	1904
60B	11	4.2	4	226	912
V15					
50A	1	10	2	645	1290
60B	2	5	2	280	560
50A	3	10	2	360	720
50A	4	6.3	1	80	80
60B	5	4.2	34	123	4182
60B	6	4.2	4	326	1304
60B	7	4.2	4	272	1088
V19					
50A	1	10	2	885	1770
50A	2	10	2	570	1140
50A	3	10	2	1020	2040
50A	4	10	2	360	720
60B	5	4.2	73	123	8979
60B	6	4.2	4	115	460
60B	7	4.2	4	270	1080
60B	8	4.2	4	345	1380
60B	9	4.2	4	335	1340
60B	10	4.2	4	348	1392

RESUMO AÇO CA 50-60			
ACO	BIT (mm)	COMPR (m)	PESO (kg)
60B	4.2	603	66
60B	5	77	12
50A	6.3	8	2
50A	10	240	151
50A	12.5	19	19
Peso Total		60B =	78 kg
Peso Total		50A =	172 kg

2			
1			
0	13/10/2013	ACS	Emissão Inicial
Rev	Data	Autor	Assunto
ARNALDO CALAZANS, M.Sc. - CREA-RJ 46.531/D Estrada do Cafundó, 1757 - Bloco 3 - Apto 705 Taquara - TEL:(021)2423-4832 - RJ			
CONCRETO fck = 250 kgf/cm2		SOBRECARGA PREVISTA	
CLIENTE Comlurb - TJERJ		OBRA N° 0001	
OBRA Gerencia Adjunta de Olaria		DES. N°	
TITULO Armação Vigas Terreo		019	
V4 / V7 / V8 / V13 / V15		REV. N°	
V19		00	
DATA 13/10/2013	ESCALA 1:50	DESENHO COM-TER-VIG-019-R00	COORD. ENG°