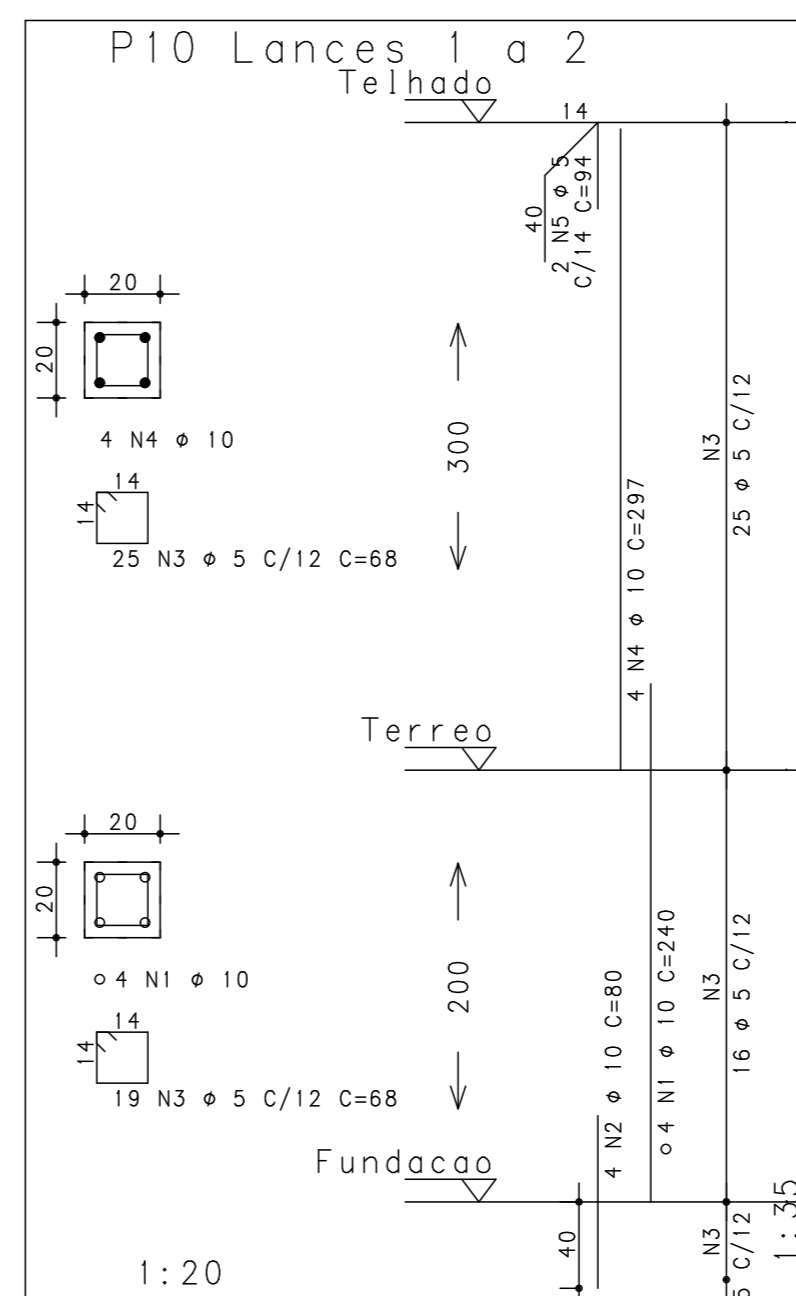
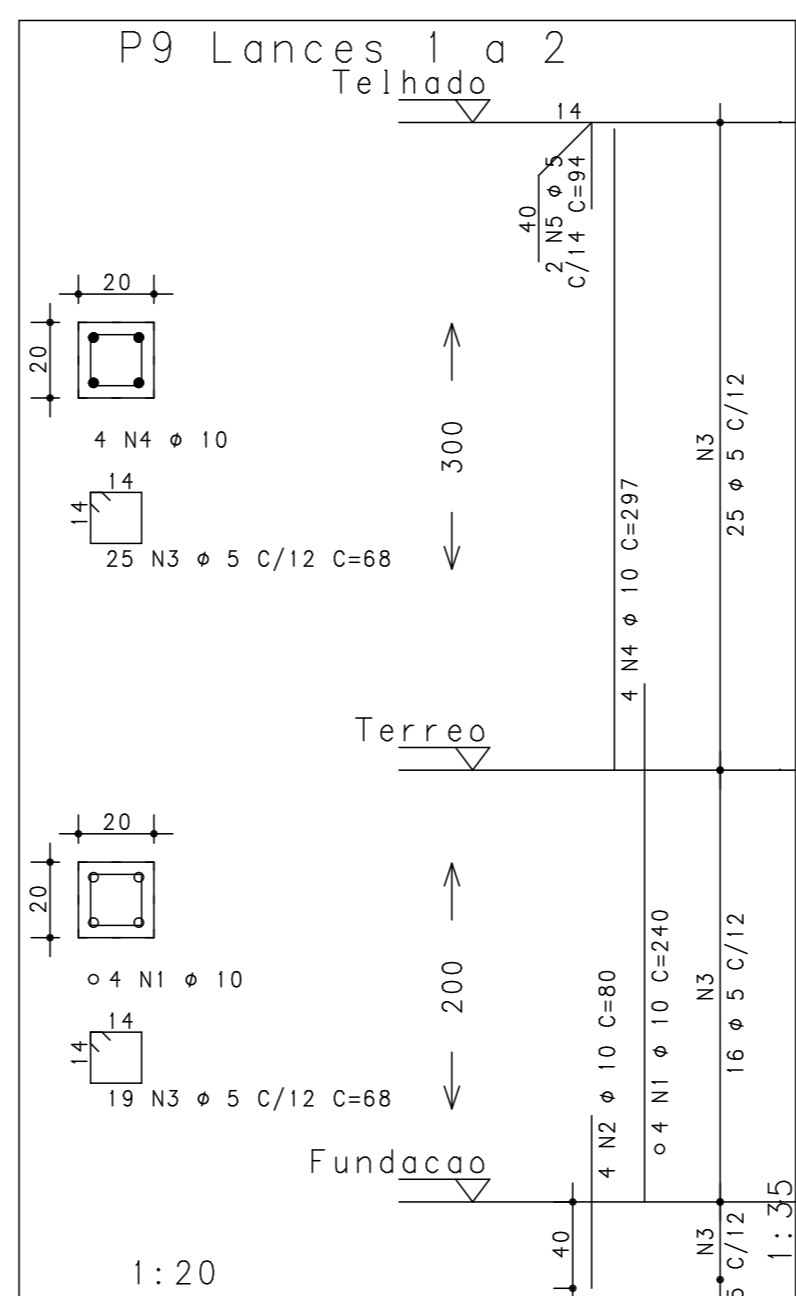
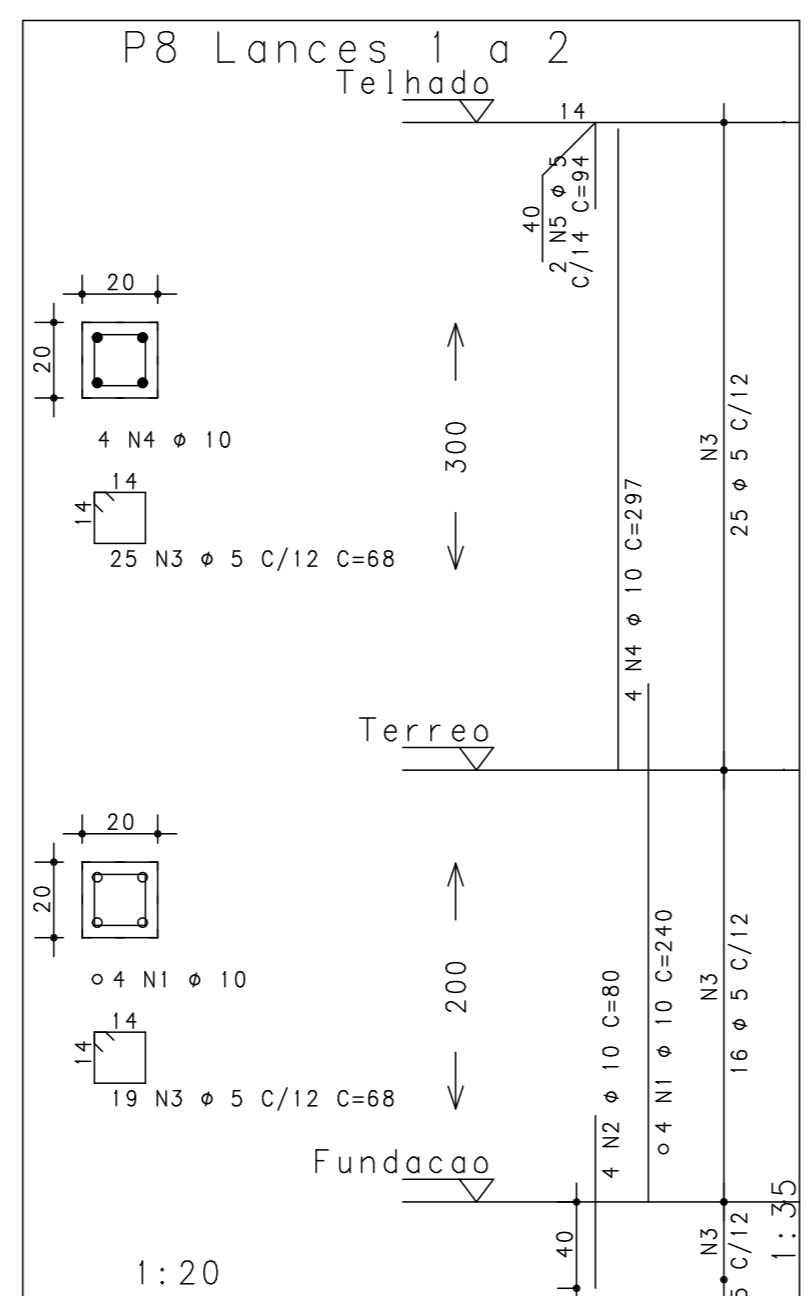
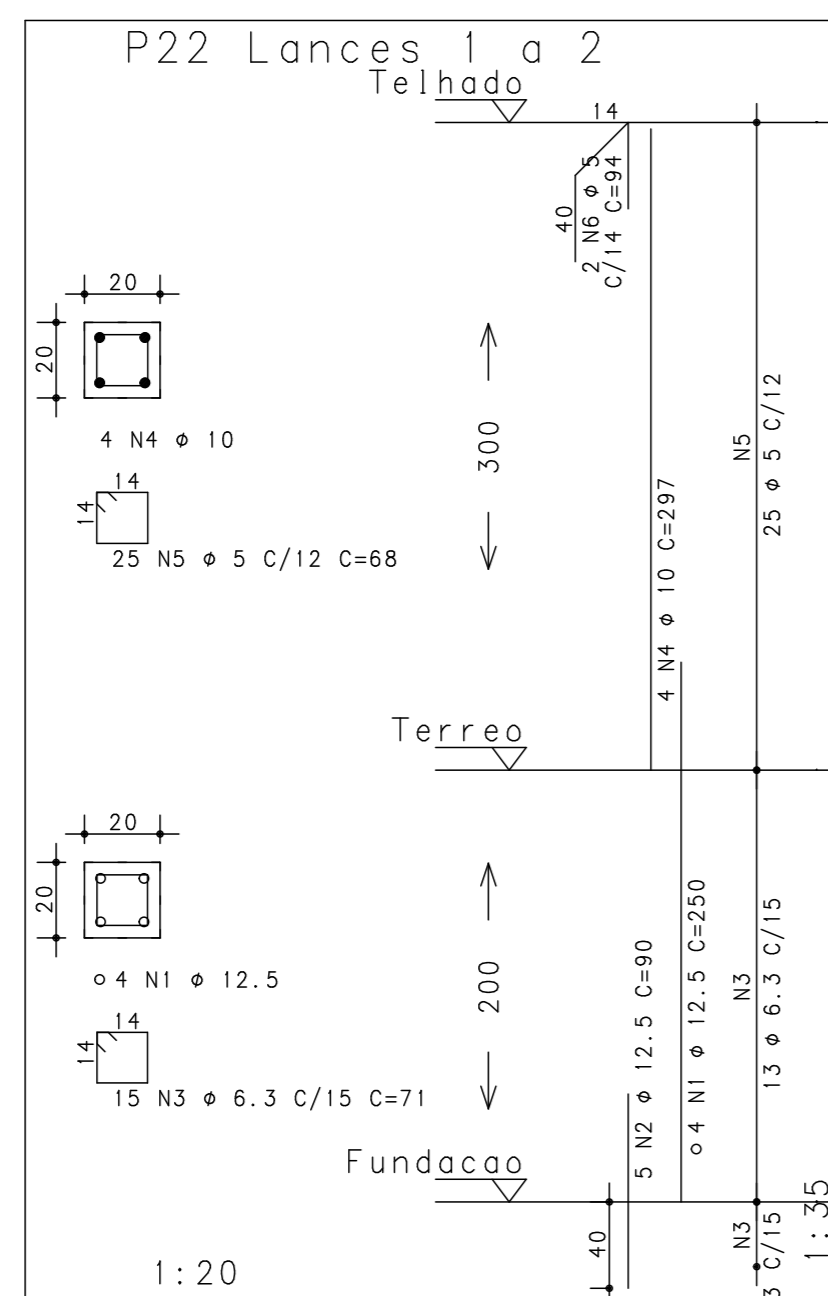
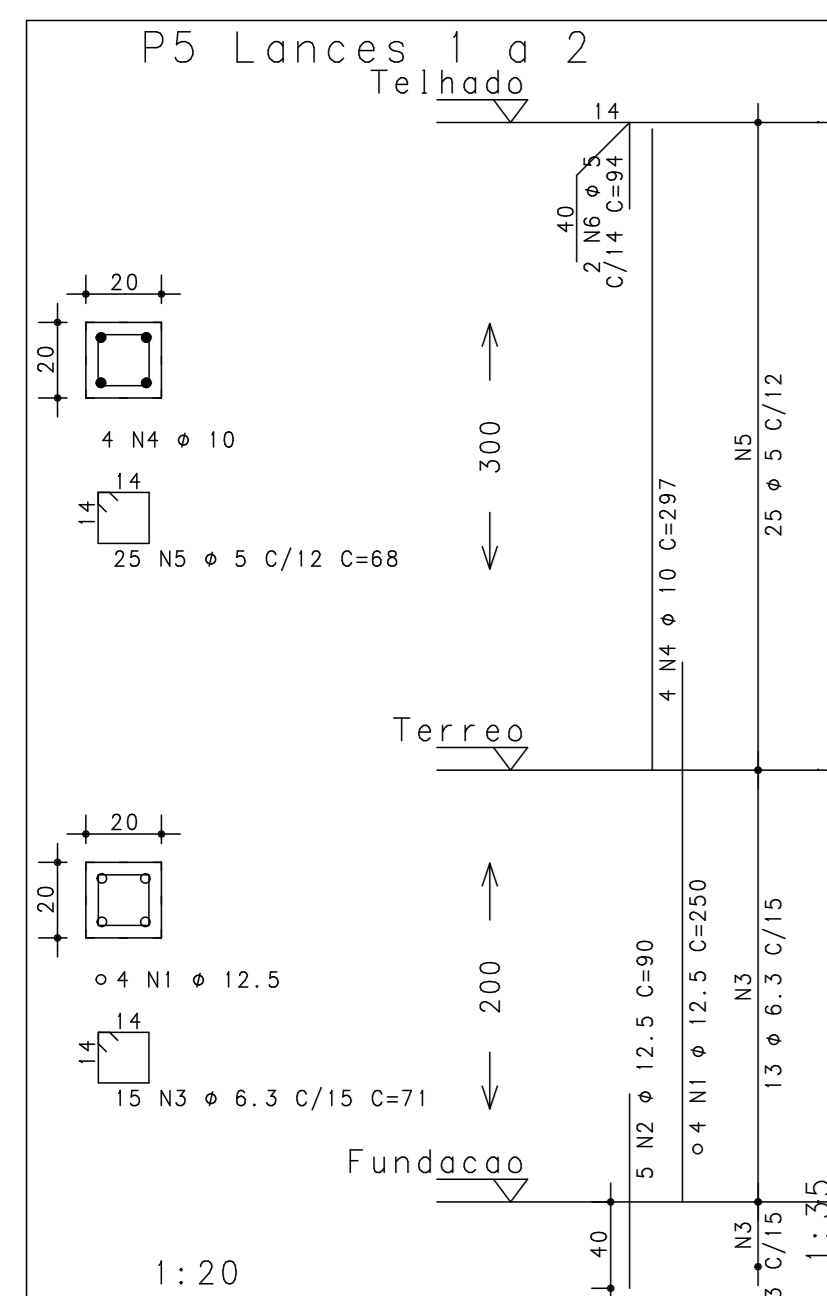


ACO	POS	BIT (mm)	QUANT	COMPRIMENTO UNIT (cm)	TOTAL (cm)
P3 Lances 1 a 2					
50A	1	12.5	2	100	200
50A	2	10	4	250	1000
50A	3	10	4	80	320
50A	4	5	16	68	1088
50A	5	12.5	4	297	1188
50A	6	6.3	20	71	1420
60B	7	5	2	94	188
P5 Lances 1 a 2					
50A	1	12.5	4	250	1000
50A	2	12.5	5	90	450
50A	3	6.3	15	71	1065
50A	4	10	4	297	1188
60B	5	5	25	68	1700
60B	6	5	2	94	188
P8 Lances 1 a 2					
50A	1	10	4	240	960
50A	2	10	4	80	320
60B	3	5	44	68	2992
50A	4	10	4	297	1188
60B	5	5	2	94	188
P9 Lances 1 a 2					
50A	1	10	4	240	960
50A	2	10	4	80	320
60B	3	5	44	68	2992
50A	4	10	4	297	1188
60B	5	5	2	94	188
P10 Lances 1 a 2					
50A	1	10	4	240	960
50A	2	10	4	80	320
60B	3	5	44	68	2992
50A	4	10	4	297	1188
60B	5	5	2	94	188
P13 Lances 1 a 4					
50A	1	10	6	240	1440
50A	2	10	6	480	480
60B	3	5	44	128	5632
60B	4	5	44	37	1628
50A	5	12.5	3	100	300
50A	6	10	6	350	2100
50A	7	12.5	7	120	840
50A	8	6.3	16	131	2096
50A	9	6.3	16	40	640
50A	10	12.5	6	177	1062
60B	11	5	3	104	312
P14 Lances 1 a 4					
50A	1	10	6	240	1440
50A	2	10	6	80	480
60B	3	5	49	128	6272
60B	4	5	49	37	1813
50A	5	10	6	340	2040
50A	6	12.5	3	100	300
50A	7	10	6	120	720
50A	8	12.5	6	177	1062
50A	9	5	12	131	1572
50A	10	6.3	12	40	480
60B	11	5	3	104	312
P18 Lances 1 a 4					
50A	1	10	6	240	1440
50A	2	10	6	80	480
60B	3	5	64	128	8192
60B	4	5	64	37	2368
50A	5	10	6	340	2040
50A	6	10	6	110	660
50A	7	10	6	177	1062
60B	8	5	3	104	312
P19 Lances 1 a 4					
50A	1	10	6	240	1440
50A	2	10	6	80	480
60B	3	5	64	128	8192
60B	4	5	64	37	2368
50A	5	10	6	340	2040
50A	6	10	6	110	660
50A	7	10	6	177	1062
60B	8	5	3	104	312
P22 Lances 1 a 2					
50A	1	12.5	4	250	1000
50A	2	12.5	5	90	450
50A	3	6.3	15	71	1065
50A	4	10	4	297	1188
60B	5	5	25	68	1700
60B	6	5	2	94	188

ACO	BIT (mm)	COMPR (m)	PESO (kg)
60B	5	525	84
50A	6.3	83	21
50A	10	312	196
50A	12.5	77	77
Peso Total 60B =			84 kg
Peso Total 50A =			294 kg



2			
1			
0	13/10/2013	ACS	Emissao Inicial
Rev	Data	Autor	Assunto

ARNALDO CALAZANS, M.Sc. - CREA-RJ 46.531/D
Estrada do Cafundó, 1757 - Bloco 3 - Apto 705 Taquara - TEL:(021)2423-4832 - RJ

CONCRETO fck = 250 kgf/cm2	SOBRECARGA PREVISTA	OBRA N° 0001
CLIENTE Comlurb - TJERJ		DES. N°
OBRA Gerencia Adjunta de Olaria		004
TITULO Armação dos Pilares		REV. N° 00
DATA 13/10/2013	PROJETO M-PIL-004-R00	COORD. ENG°

P13 Lances 1 a 4
P14 Lances 1 a 4