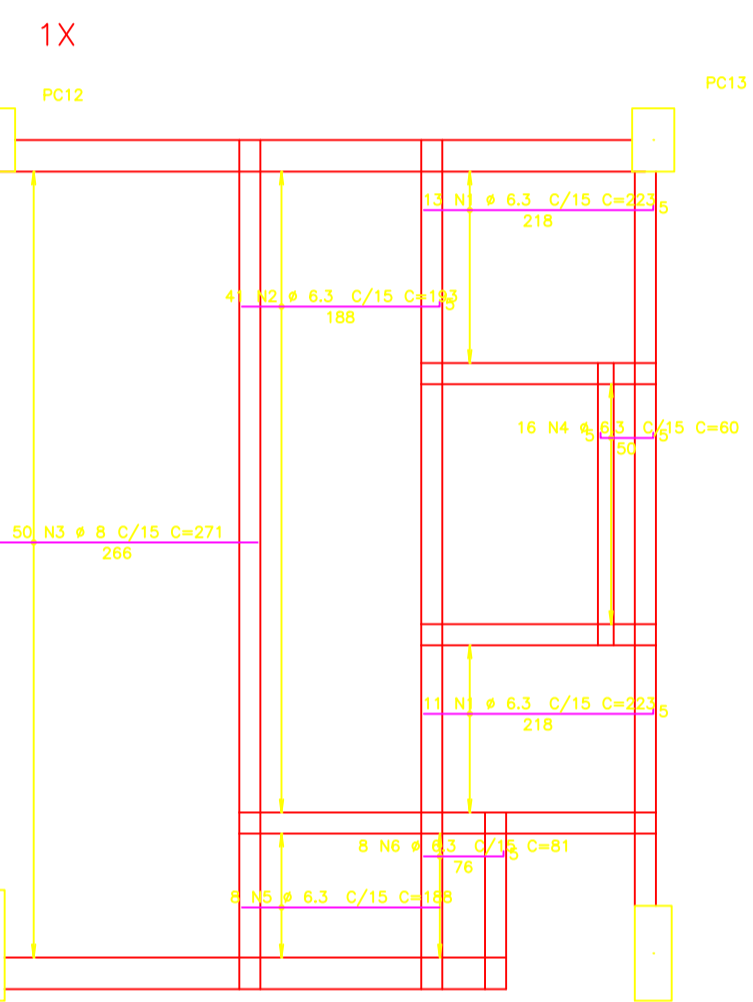
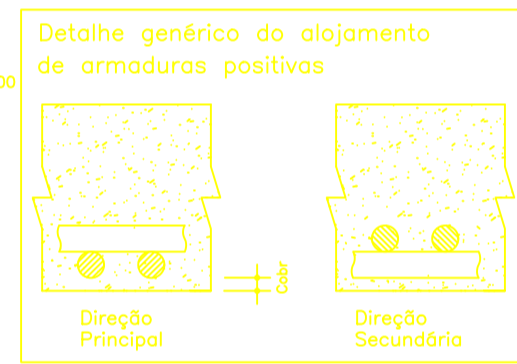
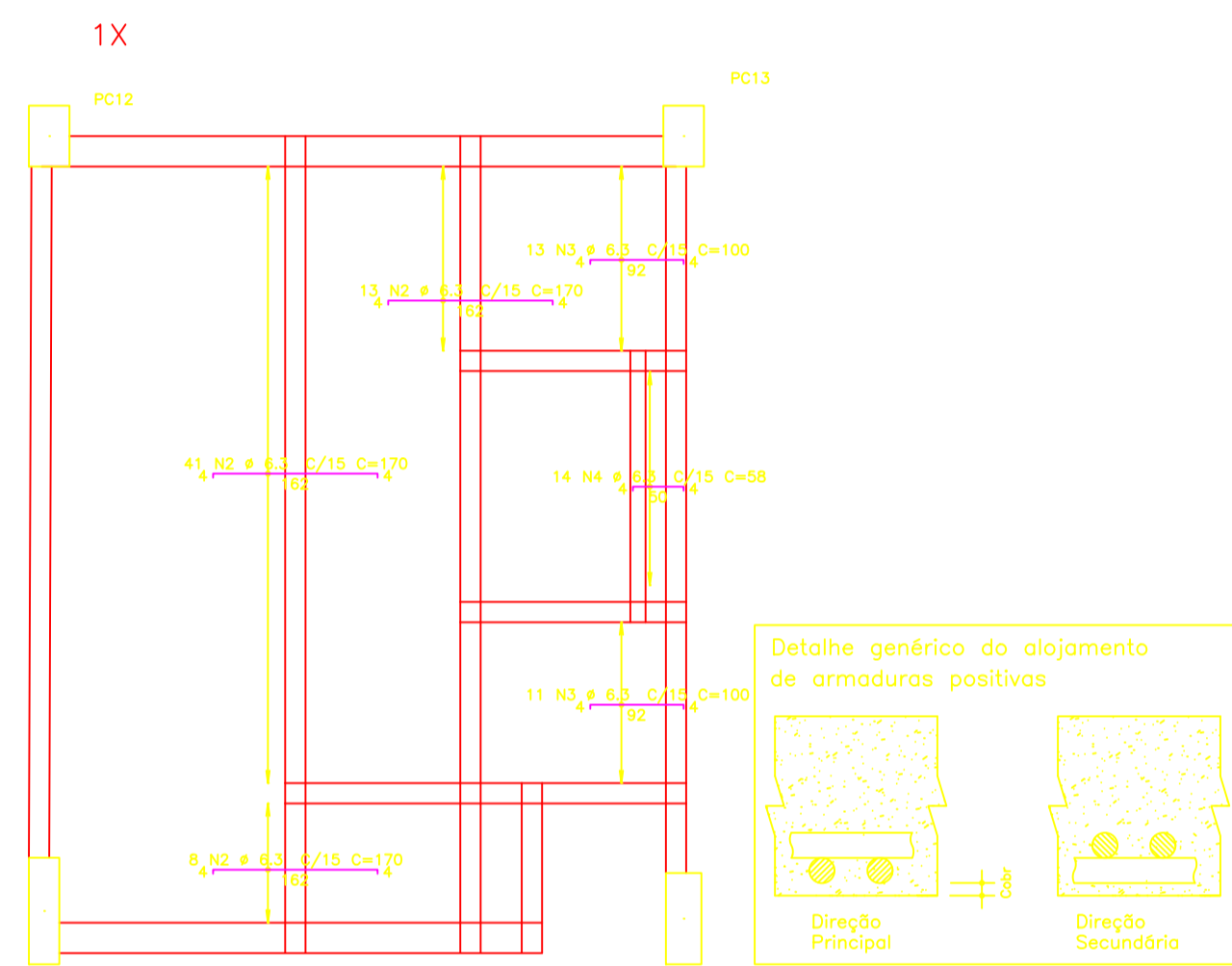


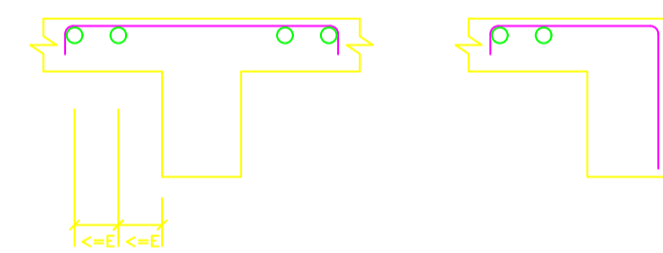
Nivel40_07 – Armadura positiva horizontal



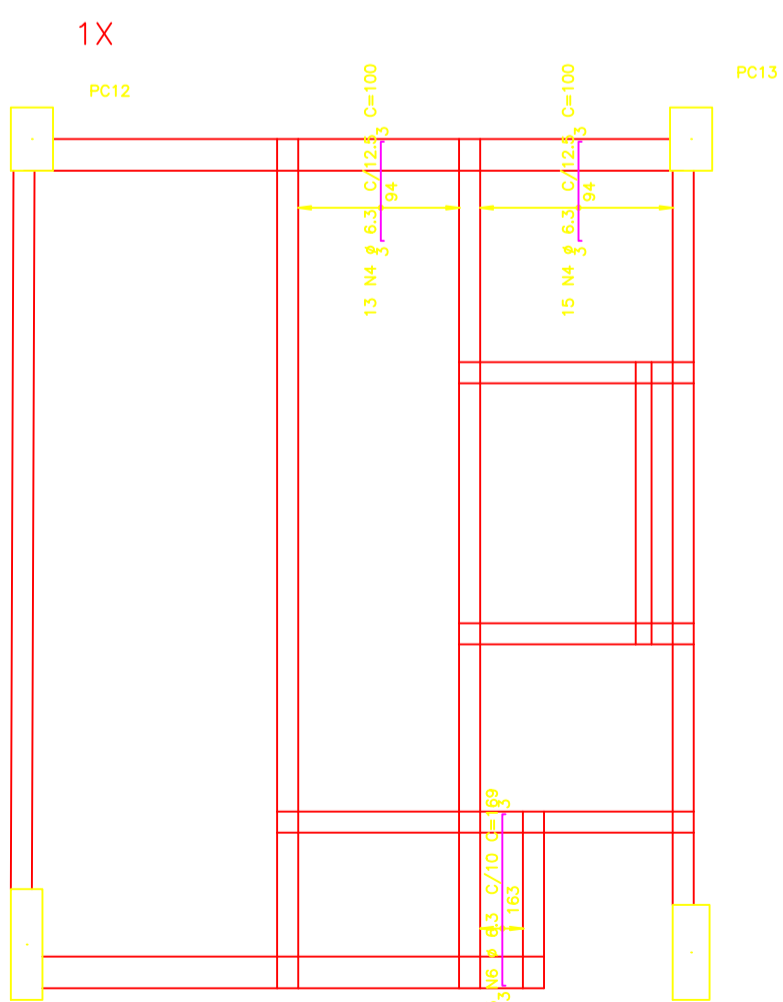
Nivel40_07 – Armadura negativa horizontal



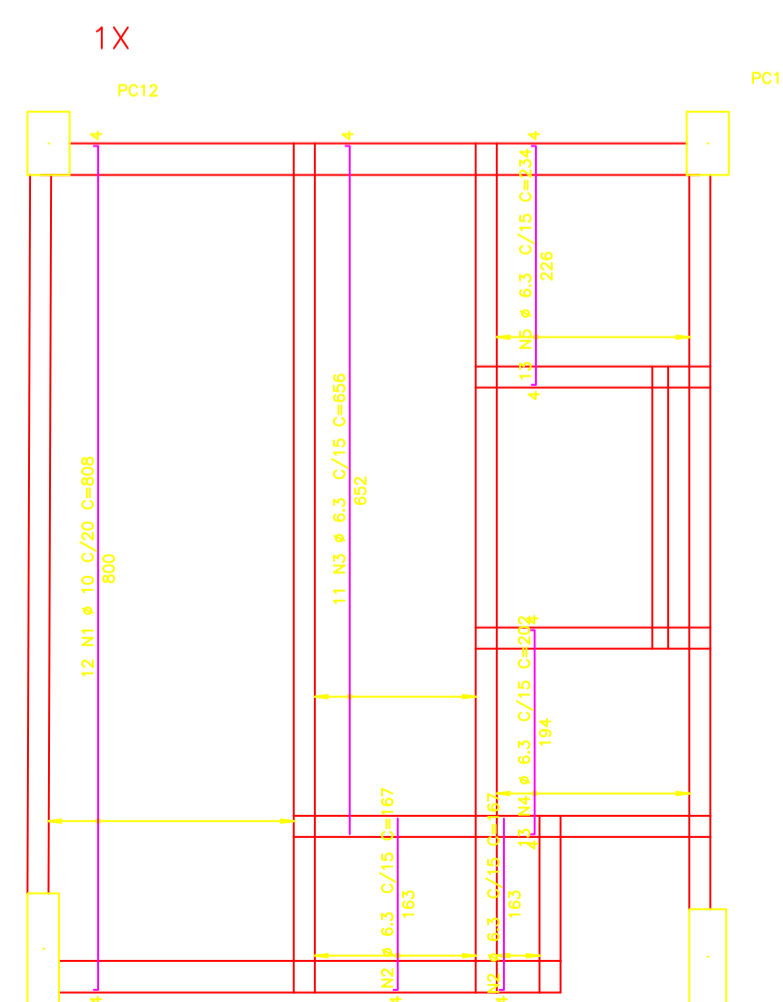
DETALHE TÍPICO DE FERROS DE DISTRIBUIÇÃO DE ARMADURA NEGATIVA



Nivel40_07 – Armadura negativa vertical



Nivel40_07 – Armadura positiva vertical



AÇO	POS	BIT (mm)	QUANT	COMPRIMENTO UNIT (cm)	TOTAL (cm)
Nivel40_07 – Armadura negativa horizontal					
50A	2	6.3	92	170	15640
50A	3	6.3	24	100	2400
50A	4	6.3	14	58	812
Nivel40_07 – Armadura negativa vertical					
50A	4	6.3	98	100	9800
50A	6	6.3	8	60	480
Nivel40_07 – Armadura positiva horizontal					
50A	1	6.3	24	235	5640
50A	2	6.3	41	195	7913
50A	3	6.3	20	271	5420
50A	4	6.3	16	60	960
50A	5	6.3	8	108	864
50A	6	6.3	8	61	488
Nivel40_07 – Armadura positiva vertical					
50A	1	6.3	12	65	780
50A	2	6.3	14	167	2338
50A	3	6.3	11	66	726
50A	4	6.3	13	202	2626
50A	5	6.3	13	235	3055

AÇO	RESUMO BIT (mm)	ACO DA 50-60 (m)	PESO (kg)
50A	3	180	120
50A	6	136	84
50A	10	87	60
Peso Total 50A =			264

11/03/2017	ACS	Emissão inicial	
Rev	Data	Autor	Assunto
ARNALDO CALAZANS, M.Sc. – CREA-RJ 46.531/D Estrada do Cofundó, 1757 – Bloco 3 – Apto 705 Tequara – TEL:(021)2423-4832 – RJ			
CONCRETO fck = 300 kgf/cm2		SOBRECARGA PREVISTA	0001
Montalvão			
Casa de Máquinas dos elevadores			
Armação das lajes			002
Nivel40_07 – Armadura negativa horizontal			00
Nivel40_07 – Armadura negativa vertical			
Nivel40_07 – Armadura positiva horizontal			
Nivel40_07 – Armadura positiva vertical			